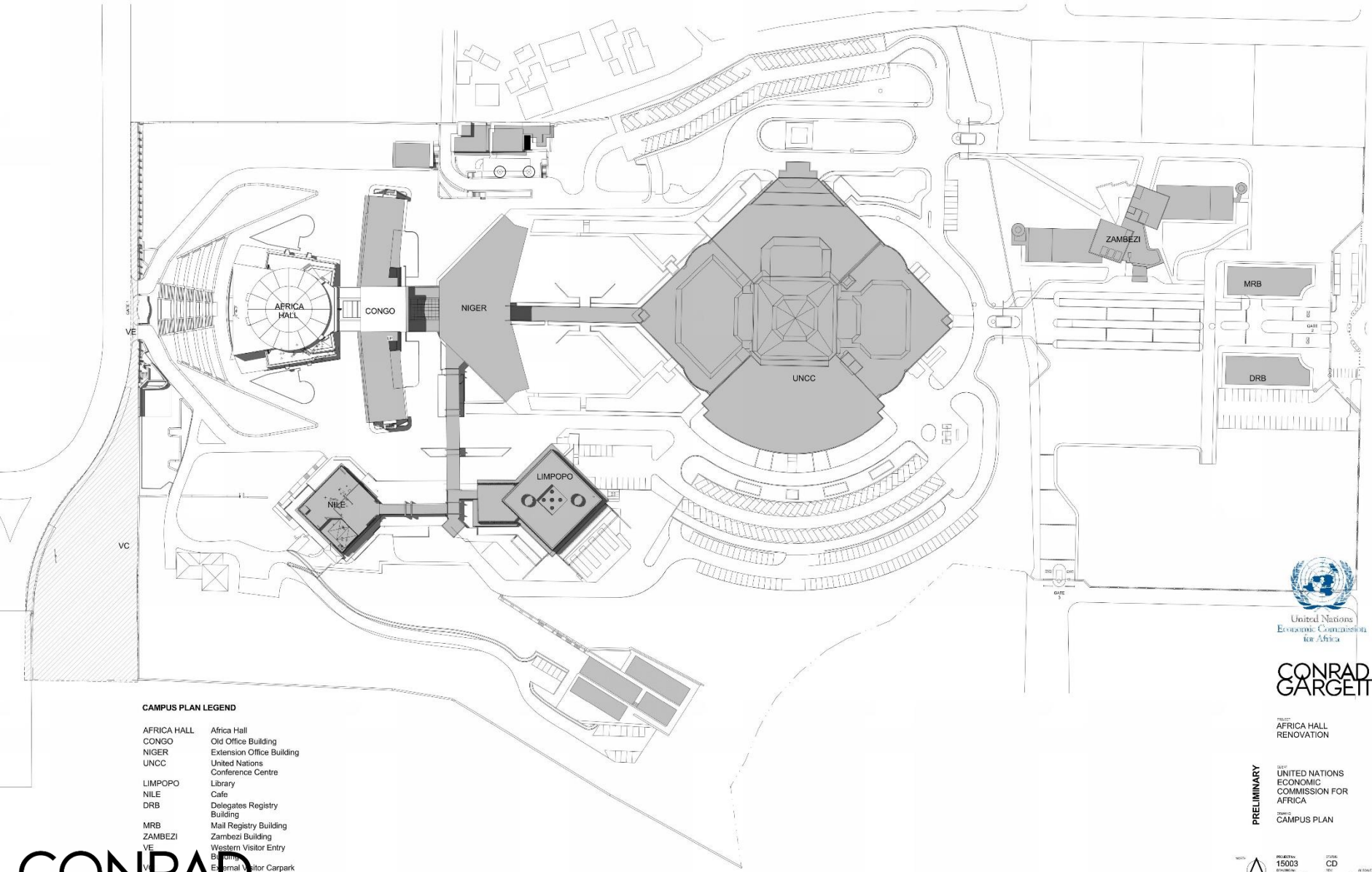




United Nations  
Economic Commission for Africa



1	2	3	4	5	6	7	8	9	10	11	12	13	14	15	16	17	18	19	20	21	22	23	24	25	26	27	28	29	30	31	32	33	34	35	36	37	38	39	40	41	42	43	44	45	46	47	48	49	50	51	52	53	54	55	56	57	58	59	60	61	62	63	64	65	66	67	68	69	70	71	72	73	74	75	76	77	78	79	80	81	82	83	84	85	86	87	88	89	90	91	92	93	94	95	96	97	98	99	100
---	---	---	---	---	---	---	---	---	----	----	----	----	----	----	----	----	----	----	----	----	----	----	----	----	----	----	----	----	----	----	----	----	----	----	----	----	----	----	----	----	----	----	----	----	----	----	----	----	----	----	----	----	----	----	----	----	----	----	----	----	----	----	----	----	----	----	----	----	----	----	----	----	----	----	----	----	----	----	----	----	----	----	----	----	----	----	----	----	----	----	----	----	----	----	----	----	----	----	-----



**CONRAD GARGETT**

PROJECT:  
AFRICA HALL  
RENOVATION

CLIENT:  
UNITED NATIONS  
ECONOMIC  
COMMISSION FOR  
AFRICA

DRAWN:  
CAMPUS PLAN

- CAMPUS PLAN LEGEND**
- AFRICA HALL Africa Hall
  - CONGO Old Office Building
  - NIGER Extension Office Building
  - UNCC United Nations Conference Centre
  - LIMPOPO Library
  - NILE Cafe
  - DRB Delegates Registry Building
  - MRB Mail Registry Building
  - ZAMBEZI Zambezi Building
  - VE Western Visitor Entry Building
  - VC External Visitor Carpark



SCALE: 1:500  
PROJECT NO: 15003  
DRAWING NO: AR-1000  
DATE: CD  
SHEET: 4

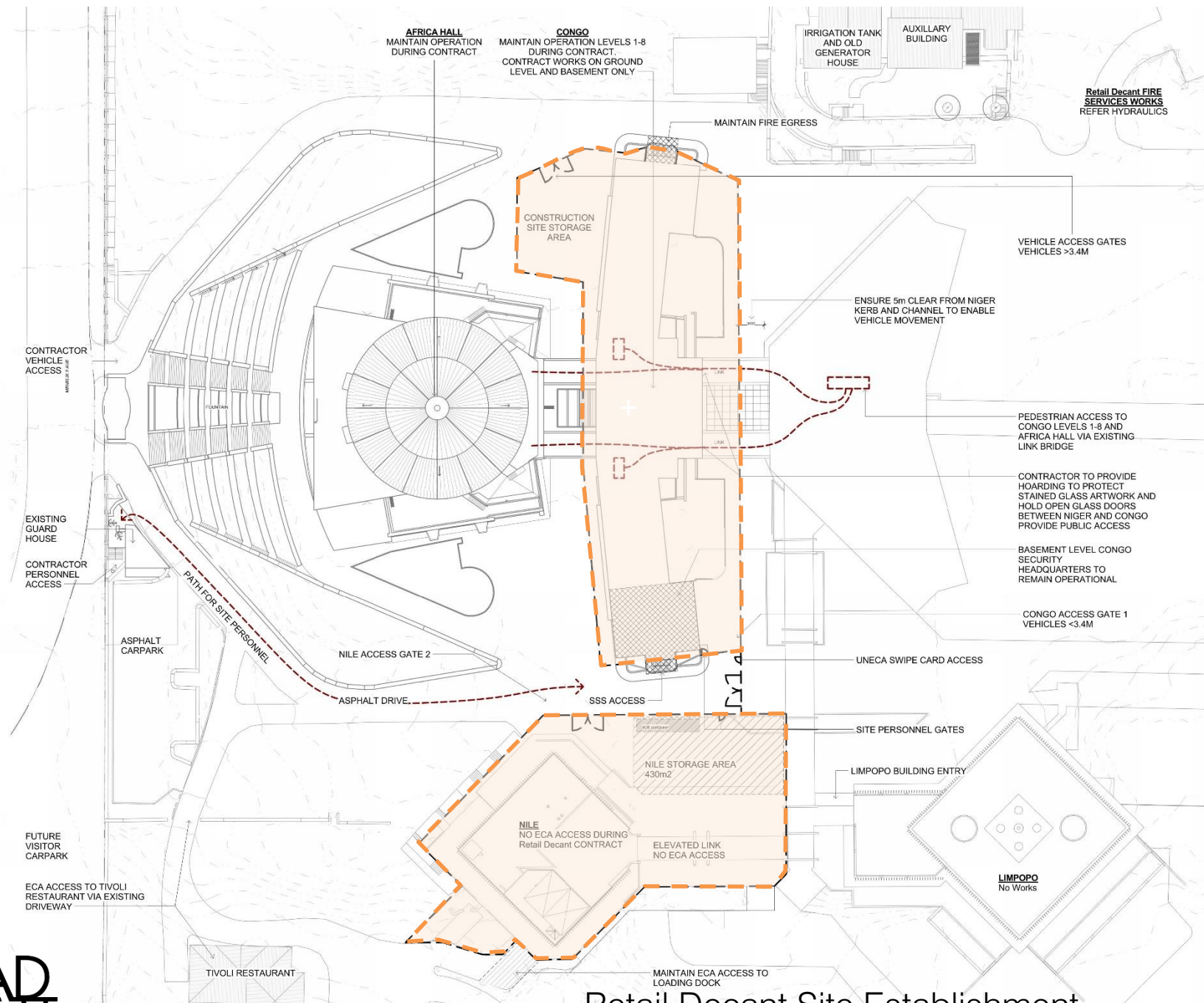
# Work Elements Status

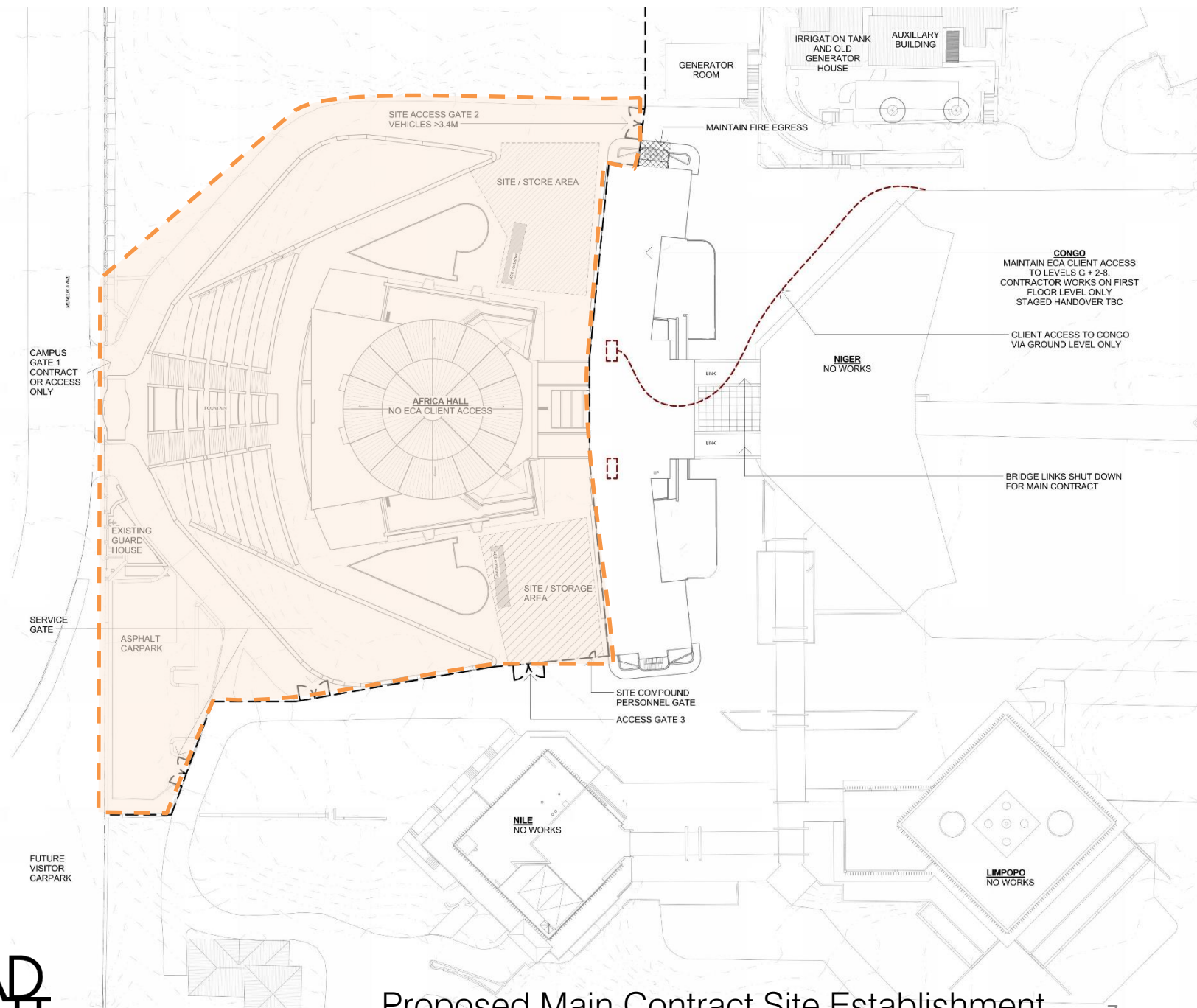
- Retail Decant (Congo + Nile Buildings) under construction
- Main Contract RfP evaluation phase (with PD in New York)
- Artwork Conservation RfP phase (second attempt)
- Audio Visual Documentation phase (due for RfP 1<sup>st</sup> qtr 2019)
- Permanent Exhibition (*awaiting ECA confirmation of key themes*)



PROJECT AREAS (GFA)	
CONGO - Retail Decant	1,067 sqm
NILE - Retail Decant	1,133 sqm
AFRICA HALL AND CONGO LOBBY	5,714 sqm
VISITOR ENTRY BUILDING	229 sqm
TOTAL PROJECT - Gross Floor Area	8,144 sqm

AFRICA HALL STATS	
NUMBER OF SEATS IN PLENARY HALL (LOWER) – DELEGATES / SUPPORTING / PODIUM / ADJACENT PODIUM	108 / 114 / 14 / 30
NUMBER OF SEATS IN UPPER GALLERY	156 (+8 wheelchair) 37 Rear Upper Gallery
TOTAL HALLS SEATS	459 (+8 wheelchair)
PRESENTATION VIDEO WALL IN PLENARY HALL	2,115 H x 10,770 W
CAFE/BAR SEATING CAPACITY – LEVEL 1	36
GROUND FLOOR EXHIBITION AND THEATRETTE AREA	303 sqm / 20 seat
GROUND FLOOR CAFÉ AND GIFTS AND SOUVENIRS	314 sqm / 200 seat
BASEMENT STORAGE AREA	312 sqm
CAR SPACES IN WESTERN CARPARK	32 + Bus setdown
OCCUPANCY/SEATING CAPACITY IN VISITOR ENTRY BUILDING	42
EXTENT OF NEW/UPGRADED LANDSCAPING	6,913 sqm



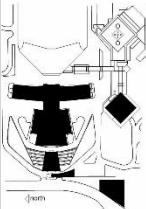


Number	Name	Area
0.01	Circulation	176.97 m <sup>2</sup>
0.10	Cleaners Storage	29.47 m <sup>2</sup>
0.22	Cleaners Lounge	27.52 m <sup>2</sup>
0.27	Cleaners Room	11.15 m <sup>2</sup>
		68.17 m <sup>2</sup>
0.17A	Food / Drink Service	6.30 m <sup>2</sup>
0.17B	Midday Refresh Room	5.19 m <sup>2</sup>
0.18A	Canteen Kitchen	14.23 m <sup>2</sup>
0.18B	Canteen Pantry	20.73 m <sup>2</sup>
0.20A	Canteen Uptst Room	9.60 m <sup>2</sup>
0.20B	Canteen Store Room	16.73 m <sup>2</sup>
0.40	Canteen's Kitchen Store	5.25 m <sup>2</sup>
		116.97 m <sup>2</sup>
0.01	Electrical Switchgear Room	23.27 m <sup>2</sup>
		23.27 m <sup>2</sup>
0.20	Female Staff Change Room	15.73 m <sup>2</sup>
0.21	Male Staff Change Room	8.17 m <sup>2</sup>
		23.94 m <sup>2</sup>
0.02	Electrical UPS Room	24.01 m <sup>2</sup>
0.03	Room	34.40 m <sup>2</sup>
0.04	Store	49.92 m <sup>2</sup>
0.05	Store	16.97 m <sup>2</sup>
0.06	Store	25.95 m <sup>2</sup>
0.07	Store	12.21 m <sup>2</sup>
0.10	Store	38.33 m <sup>2</sup>
0.11	Store	24.94 m <sup>2</sup>
		224.53 m <sup>2</sup>
0.18C	Appliances Store Room	7.64 m <sup>2</sup>

- Legend**
- Circulation
  - Cleaners
  - Food / Drink Service
  - Services
  - Staff
  - Storage
  - Technical
  - Calculating...

**Department Schedule - AH...**

Number	Name	Area
0.01	Circulation	176.97 m <sup>2</sup>
0.10	Cleaners Storage	29.47 m <sup>2</sup>
0.22	Cleaners Lounge	27.52 m <sup>2</sup>
0.27	Cleaners Room	11.15 m <sup>2</sup>
		68.17 m <sup>2</sup>
0.17A	Food / Drink Service	6.30 m <sup>2</sup>
0.17B	Midday Refresh Room	5.19 m <sup>2</sup>
0.18A	Canteen Kitchen	14.23 m <sup>2</sup>
0.18B	Canteen Pantry	20.73 m <sup>2</sup>
0.20A	Canteen Uptst Room	9.60 m <sup>2</sup>
0.20B	Canteen Store Room	16.73 m <sup>2</sup>
0.40	Canteen's Kitchen Store	5.25 m <sup>2</sup>
		116.97 m <sup>2</sup>
0.01	Electrical Switchgear Room	23.27 m <sup>2</sup>
		23.27 m <sup>2</sup>
0.20	Female Staff Change Room	15.73 m <sup>2</sup>
0.21	Male Staff Change Room	8.17 m <sup>2</sup>
		23.94 m <sup>2</sup>
0.02	Electrical UPS Room	24.01 m <sup>2</sup>
0.03	Room	34.40 m <sup>2</sup>
0.04	Store	49.92 m <sup>2</sup>
0.05	Store	16.97 m <sup>2</sup>
0.06	Store	25.95 m <sup>2</sup>
0.07	Store	12.21 m <sup>2</sup>
0.10	Store	38.33 m <sup>2</sup>
0.11	Store	24.94 m <sup>2</sup>
		224.53 m <sup>2</sup>
0.18C	Appliances Store Room	7.64 m <sup>2</sup>



CONRAD GARGETT

ALL DRAWINGS TO BE READ IN COLOUR

PROJECT: AFRICA HALL RENOVATION

CLIENT: UNITED NATIONS ECONOMIC COMMISSION FOR AFRICA

DRAWING: PRECINCT PLAN - PROPOSED BASEMENT

PROJECT: 15003 CD AR-1006 3 1:250

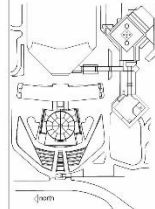
CONRAD GARGETT

# Basement Precinct Plan



- Legend**
- Ablution
  - Circulation
  - Exhibition
  - Food / Drink Service
  - Retail
  - Technical
  - Calculating...

Scale	1:250
Project No.	15003
Client	UNEP
Design No.	AR-1007
Sheet No.	4
Total Sheets	4



ALL DRAWINGS TO BE READ IN COLOUR

**CONRAD GARGETT**

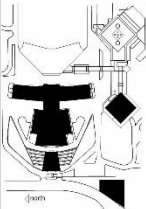
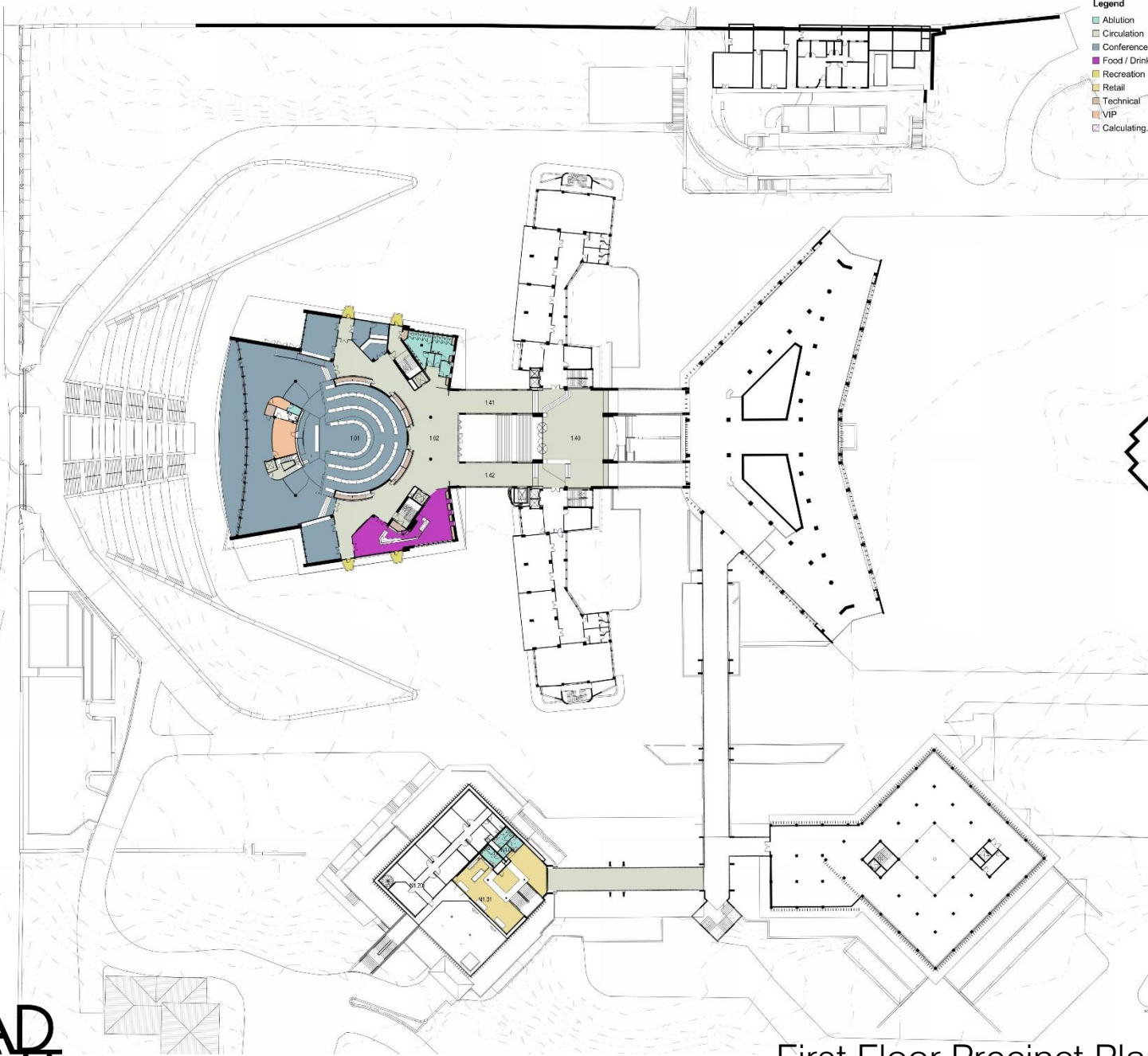
PROJECT: AFRICA HALL RENOVATION  
 CLIENT: UNITED NATIONS ECONOMIC COMMISSION FOR AFRICA  
 DRAWING: PRECINCT PLAN - PROPOSED GROUND

Scale	1:250
Project No.	15003
Client	UNEP
Design No.	AR-1007
Sheet No.	4
Total Sheets	4

**CONRAD GARGETT**

Ground Floor Precinct Plan

- Legend**
- Ablution
  - Circulation
  - Conference
  - Food / Drink Service
  - Recreation
  - Retail
  - Technical
  - VIP
  - Calculating...



**CONRAD GARGETT**

ALL DRAWINGS TO BE READ IN COLOUR

PRELIMINARY

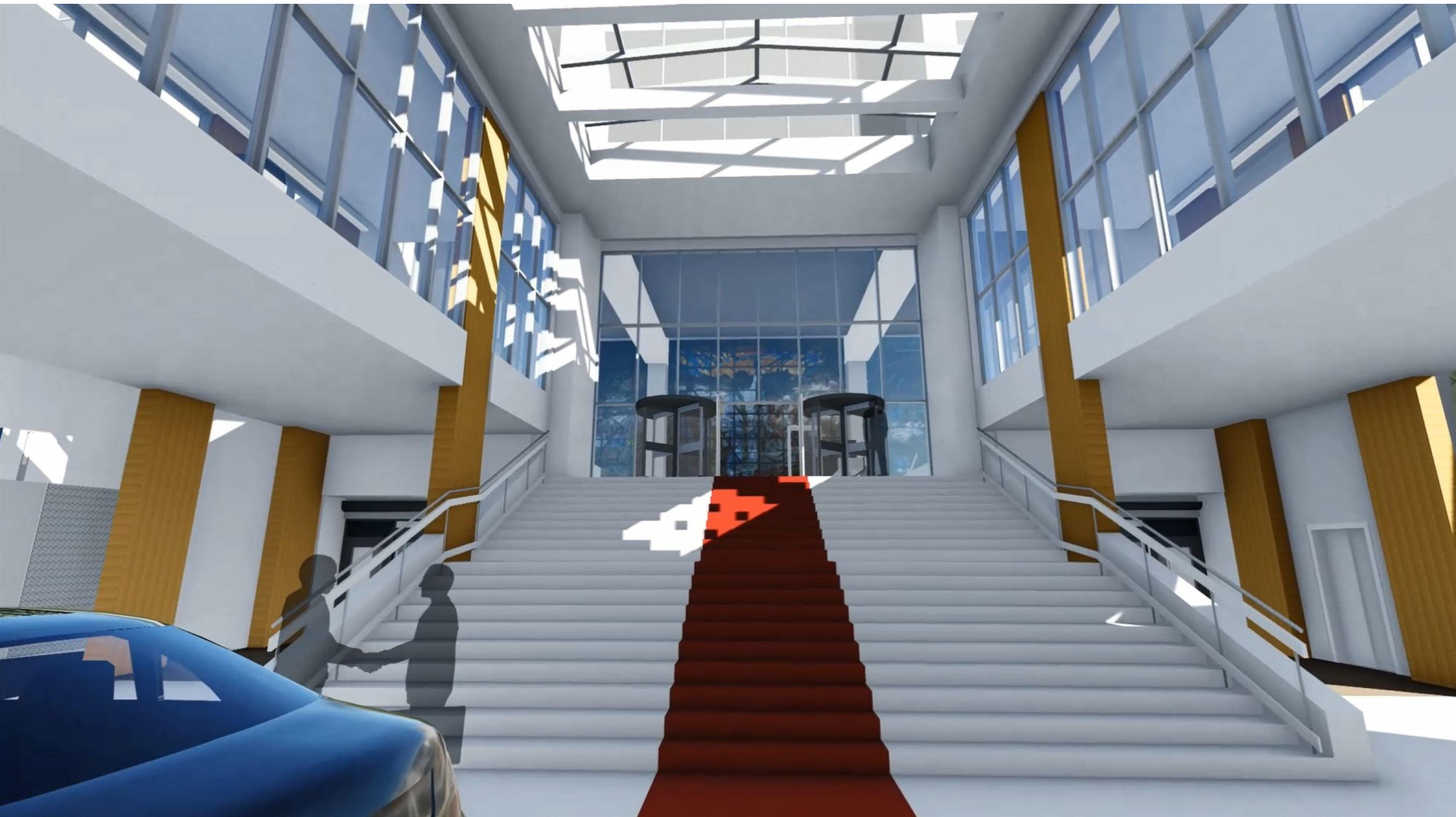
PROJECT: AFRICA HALL RENOVATION  
 CLIENT: UNITED NATIONS ECONOMIC COMMISSION FOR AFRICA  
 DRAWING: PRECINCT PLAN - PROPOSED FIRST FLOOR  
 PROJECT NO: 15003  
 SHEET NO: AR-1008  
 DATE: CD  
 SCALE: 1 : 250

**CONRAD GARGETT**

First Floor Precinct Plan 10



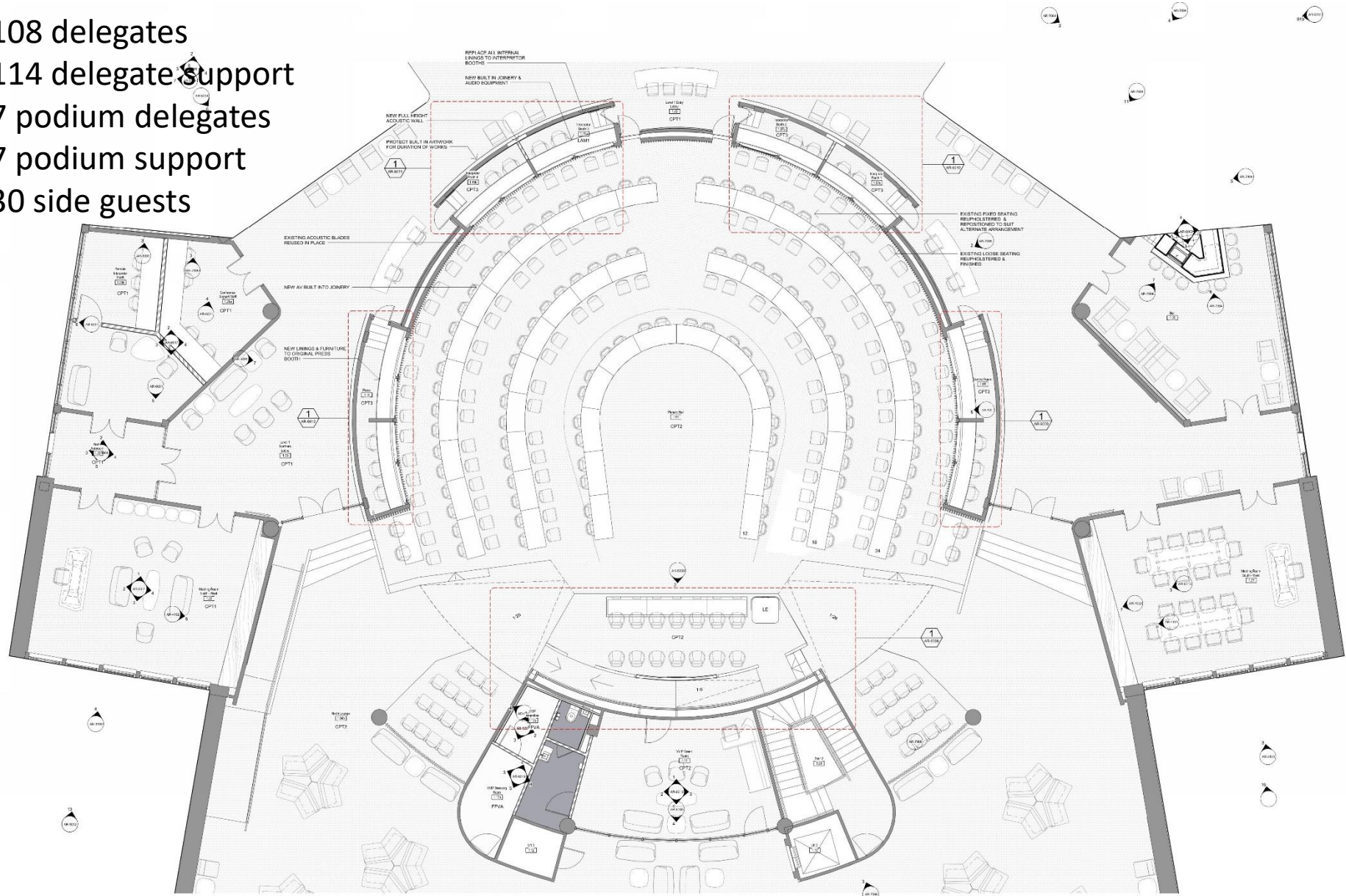






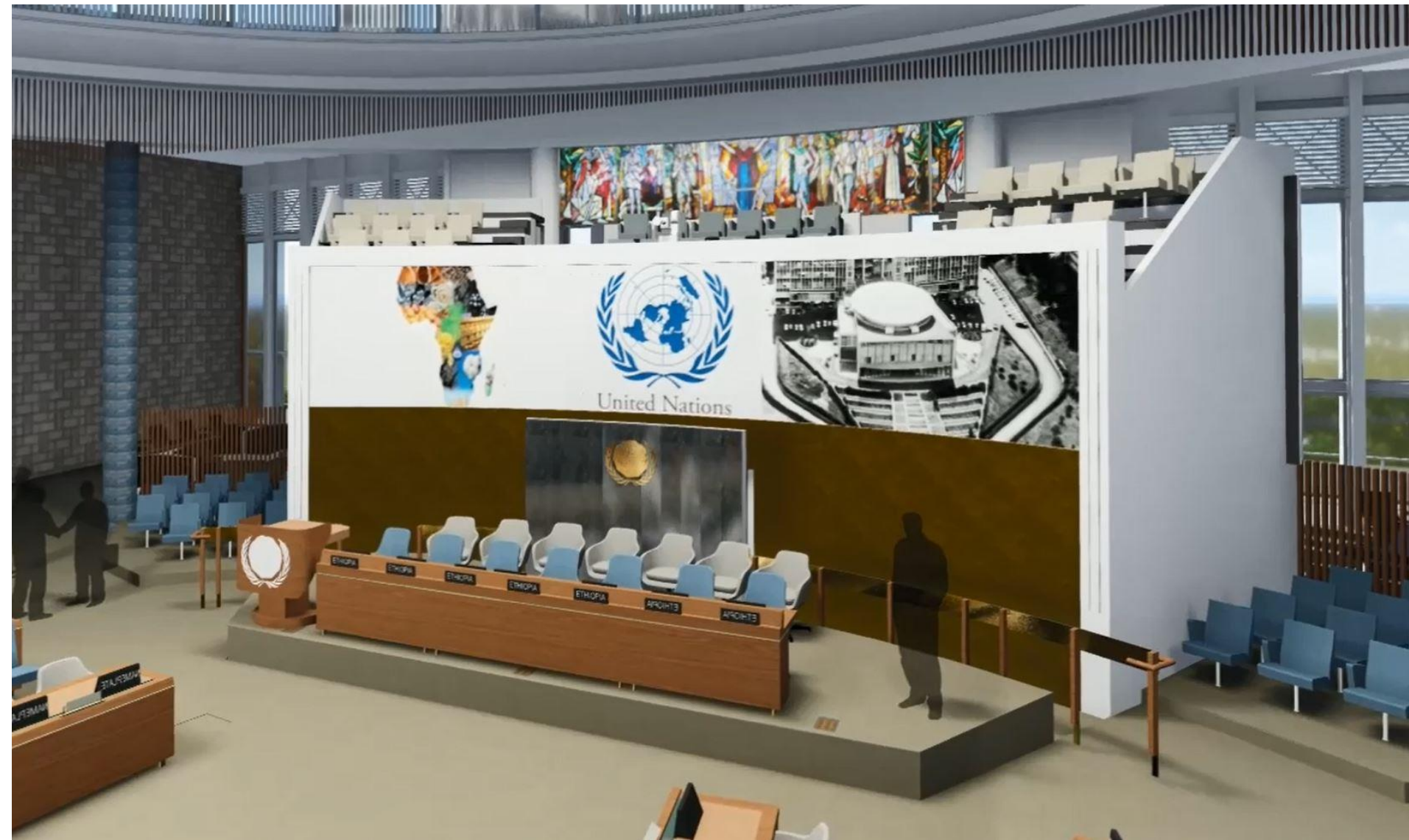
New security checkpoint

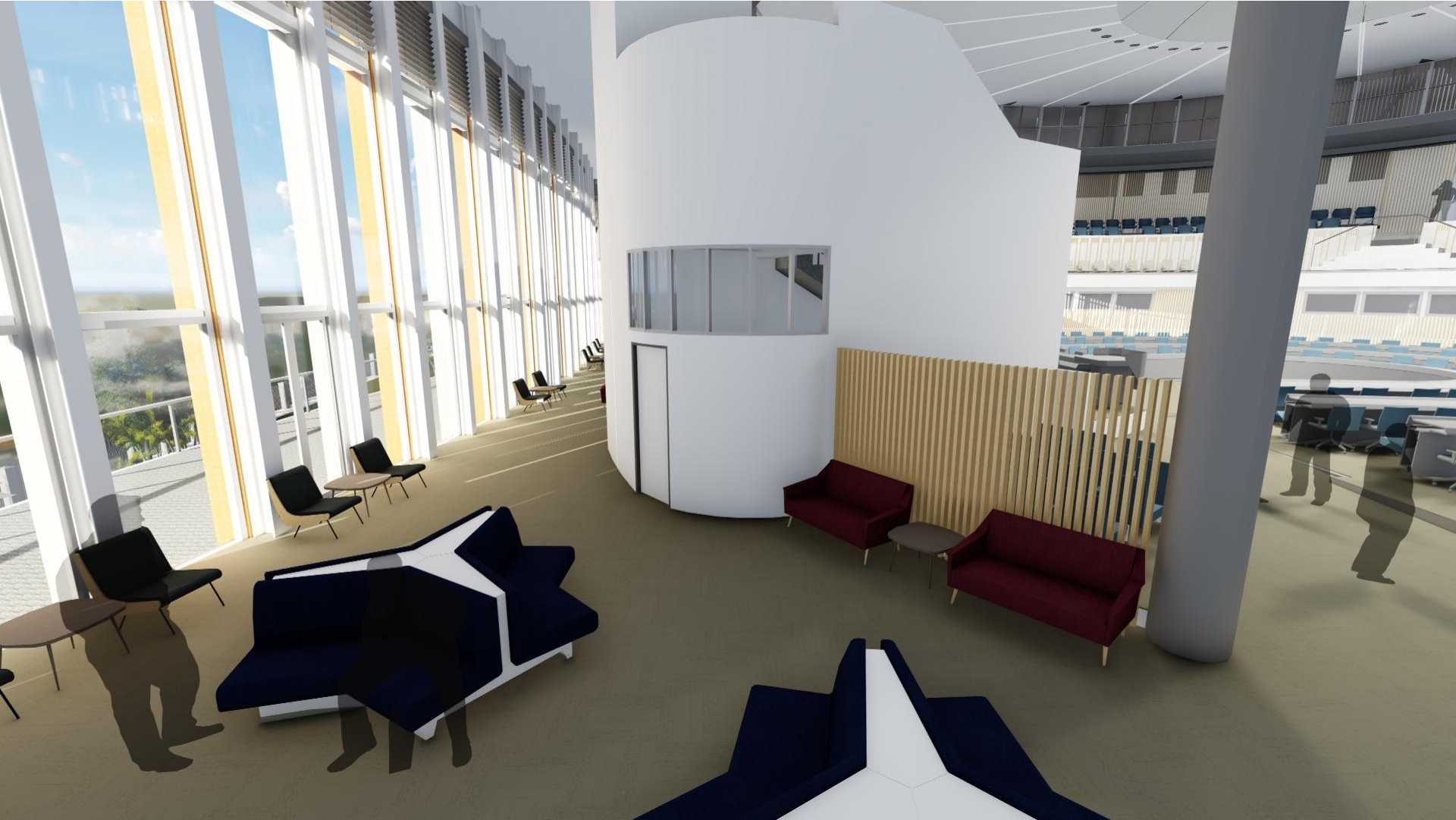
108 delegates  
 114 delegate support  
 7 podium delegates  
 7 podium support  
 30 side guests







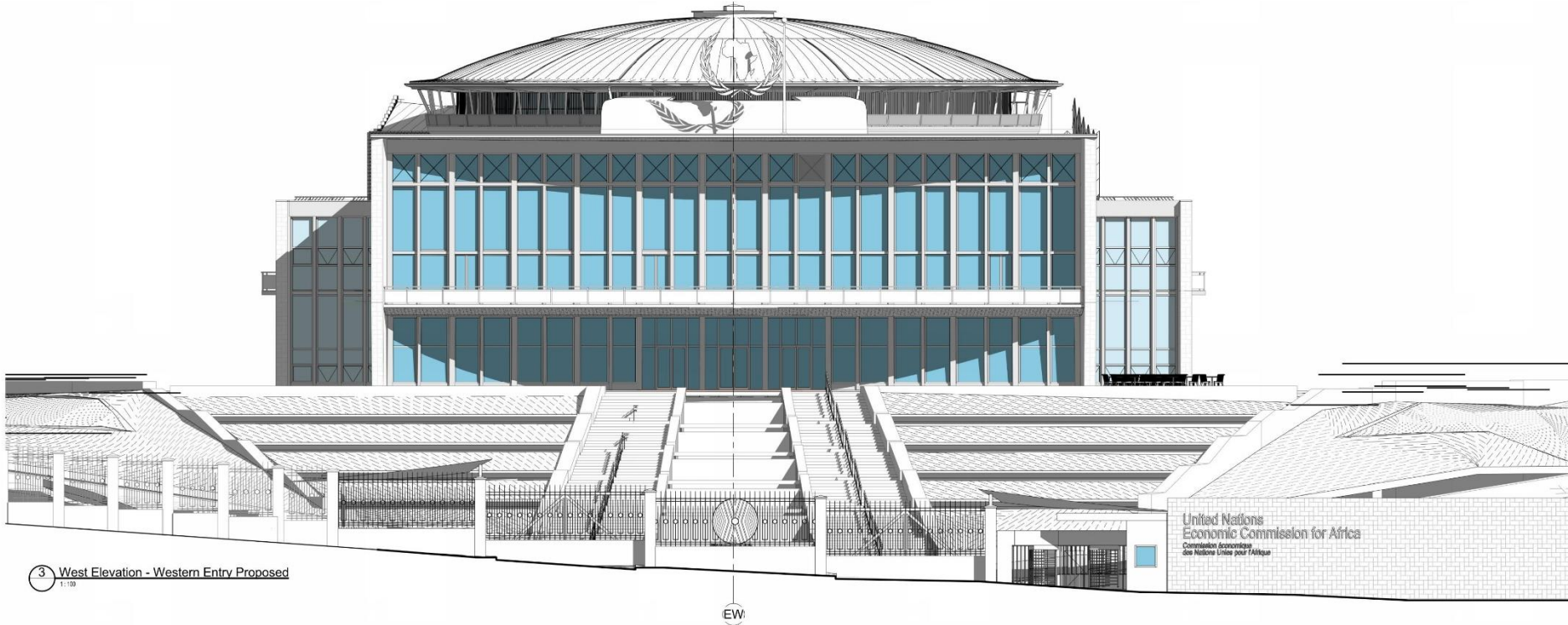




- LEGEND**
1. Ceremonial Steps / Waterfeature
  2. Northern Grass Terrace
  3. Southern Grass Terrace
  4. Northern Embankment Wing
  5. Southern Embankment Wing
  6. Northern Tear Drop (Ornamental Garden)
  7. Southern Tear Drop (Ornamental Garden)
  8. Northern Woodland
  9. Southern Woodland
  10. Northern Africa Hall Terrace
  11. Southern Africa Hall Terrace
  12. Northern Congo Planting
  13. Southern Congo Planting
  14. Make Good Entry Plaza
  15. Planting Under Skywalk
  16. Planting - Market Place
  17. Open Space
  18. Western Carpark
  19. Tree Courtyard / Turfed Area
  20. Drop-off / Pick Up
  21. Arrival Forecourt







3 West Elevation - Western Entry Proposed  
1:100

EW

United Nations  
Economic Commission for Africa  
Commissariat Economique  
des Nations Unies pour l'Afrique

## EXHIBITION THEMES

The following three key themes are proposed;

- The United Nations (Global message)
- The Economic Commission for Africa (Regional message)
- Africa Hall (Local message)

These three key themes are the basis for the permanent exhibition and visitor experience. The key objective of the exhibition is to disseminate the message of these three key themes to all visitors.

As well as a permanent exhibition, a temporary exhibition and function space is proposed for the central Rotunda space of Ground Floor. A system of removable lightweight wall panels will provide exhibition wall space for either locally developed or imported temporary exhibitions.

Localised interpretative panels throughout Africa Hall and its surrounds to highlight key spaces, artworks and historic artefacts will provide visitors with detailed information of the building, its history and function.

### Theme 1: The United Nations

Information within this area of the exhibition could include:

- Preceding League of Nations organisation
- Established following the conclusion of WWII in order to prevent armed conflict.
- Founding member states - Current member states
- United Nations Charter and Objectives
- Locations around the world
- Description and information of the six principal organs
  - General Assembly
  - Security Council
  - Economic and Social Council
  - Secretariat
  - International court of Justice
  - United Nations Trusteeship Council
- Key agencies operating around the world
  - WHO
  - UNESCO
  - UNICEF
  - UNHCR
- Millennium Sustainable Development Goals
- Current and previous Secretary Generals

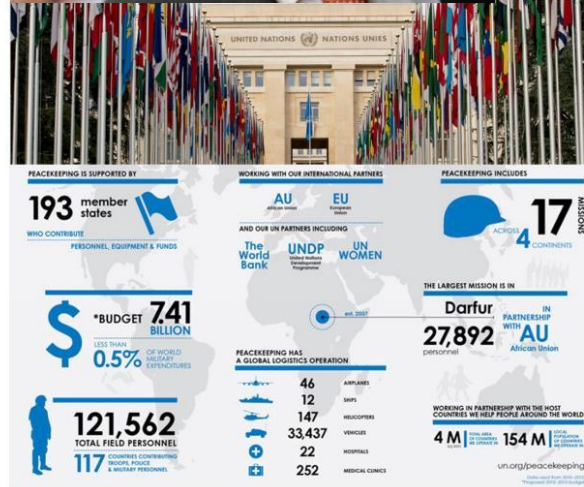
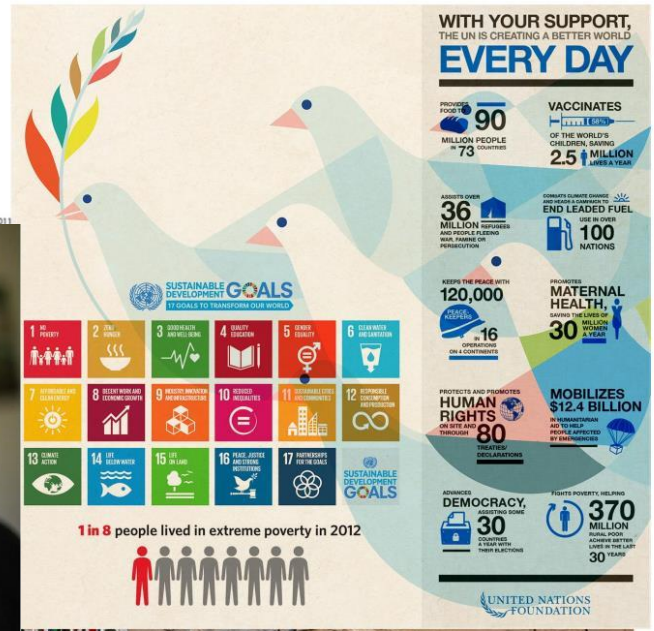


Figure 4 Permanent Exhibition United Nations Theme 1 Ideas Montage

**Theme 2: The Economic Commission for Africa**

- Information within this area of the exhibition could include;
  - Information in relation to Pan-African geopolitical history and the Pan-African Congresses (1900 to 1940s) predating the formation of an ECA.
  - The Pan-African Movement with the two Accra Conferences in 1958 which influenced the United Nations General Assembly 1958 resolution.
  - The establishment of the UN Economic Commission for Africa (ECA) by the Economic and Social Council (ECOSOC) of the United Nations (UN) in 1958 as one of the UN's five regional commissions.
  - ECA's mandate is to promote the economic and social development of its member States, foster intra-regional integration, and promote international cooperation for Africa's development.
  - The Organisation of African Unity (OAU) was the crystallisation of the Pan-African Movement in context of the unity of sovereign African states.
  - The replacement of the Organisation of African Unity by the African Union.
  - The Commission meets annually at the ministerial level to discuss and decide on important issues pertaining to inclusive and sustainable economic and social development in the region
  - The events, key moments and historical decisions made by the ECA and conferences held on the site between 1961 to the present and how these decisions have influenced the course of Modern African History.
  - The current and future thematic areas of focus ECA -
    - Macroeconomic Policy
    - Regional Integration and Trade
    - Social Development
    - Natural Resources
    - Innovation and Technology
    - Gender
    - Governance
- ECA Locations:
  - Addis Ababa, Ethiopia (Headquarters)
  - Yaounde, Cameroon (Central African subregional headquarters)
  - Kigali, Rwanda (East African subregional headquarters)
  - Rabat, Morocco (North African subregional headquarters)
  - Lusaka, Zambia (Southern African subregional headquarters)
  - Niamey, Niger (West African subregional headquarters)



Figure 5 Permanent Exhibition Economic commission for Africa Theme 2 Ideas Montage

**Theme 3: Africa Hall**

- The selection of the site
- The role of HIM Haile Selassie
- The story of Architect Arturo Mezzedimi,
- The design of the building including stylistic influences and commentary on the building's influence on the architectural legacy of Addis Ababa
- The story of the building's construction
- The commissioning of the integrated artworks
- Key events which have taken place within Africa Hall since 1961
- The building now and the recent renovation



Figure 6 Permanent Exhibition Africa Hall Theme 3 Ideas Montage



# Africa Hall - Programme

Retail Decant Construction  
February 2018 - February 2019

Main Contract Construction  
December 2018 – September 2021

Artwork Conservation Construction  
January 2019 – September 2021

Audio Visual Construction  
April 2020 – May 2021

Permanent Exhibition Construction  
August 2020 – September 2021

# Current construction works

- Demolition completed
- Civil works underway
- Latent site conditions uncovered leading to proposed contract amendment



# Current project discussion points

- Western land acquisition from host government
- Procurement of main works
- Permanent exhibition content / curatorial authority
- Coordination with concurrent capitol works

# Project Risks

- Stakeholder continued interest in project (ECA / UNHQ)
- Timely ECA project input
- Changing user requirements impact to budget
- Logistical constraints of local construction
- Contractor and sub-contractors capacities
- Timely procurement processes