



INFF Phase 1: Botswana

T. P KEDIKILWE, M. MOTLHAJOE; P
KGOSIMOTHO & M RABOLOKO



**SUSTAINABLE
DEVELOPMENT
GOALS**



Outline

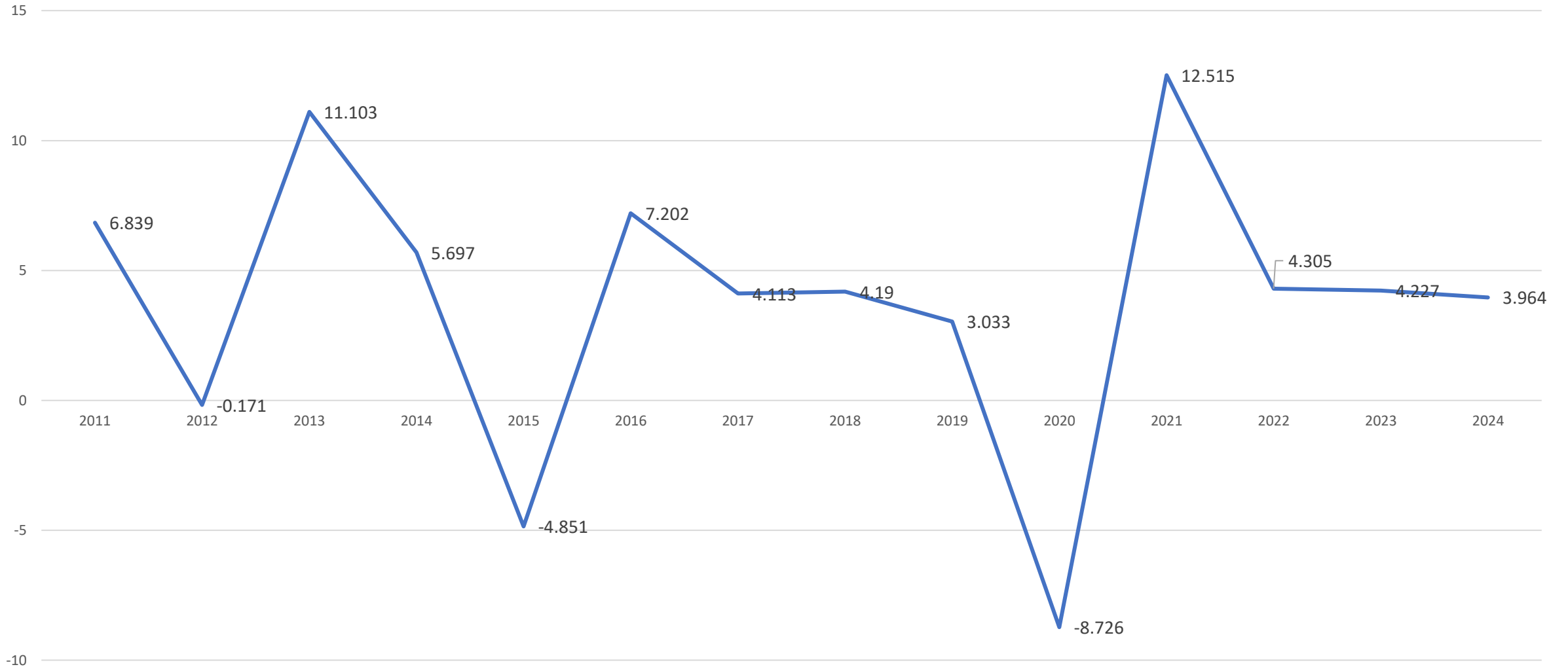
- Background
- Botswana Domestication Instruments for SDGs
- Business Case for Gender Based Budgeting
- Findings of the Botswana DFA
- Gender Based Budgeting and Its Integration to the DFA
- The Roadmap
- Next Steps

Background: About Botswana

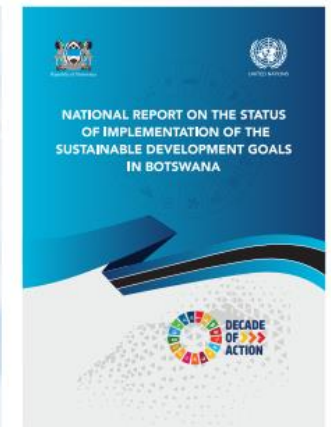
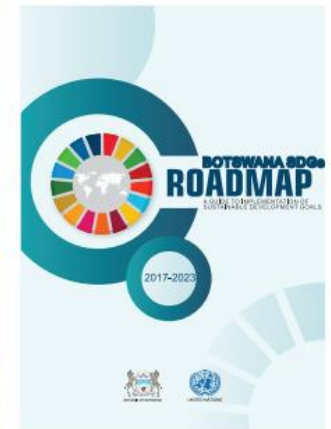
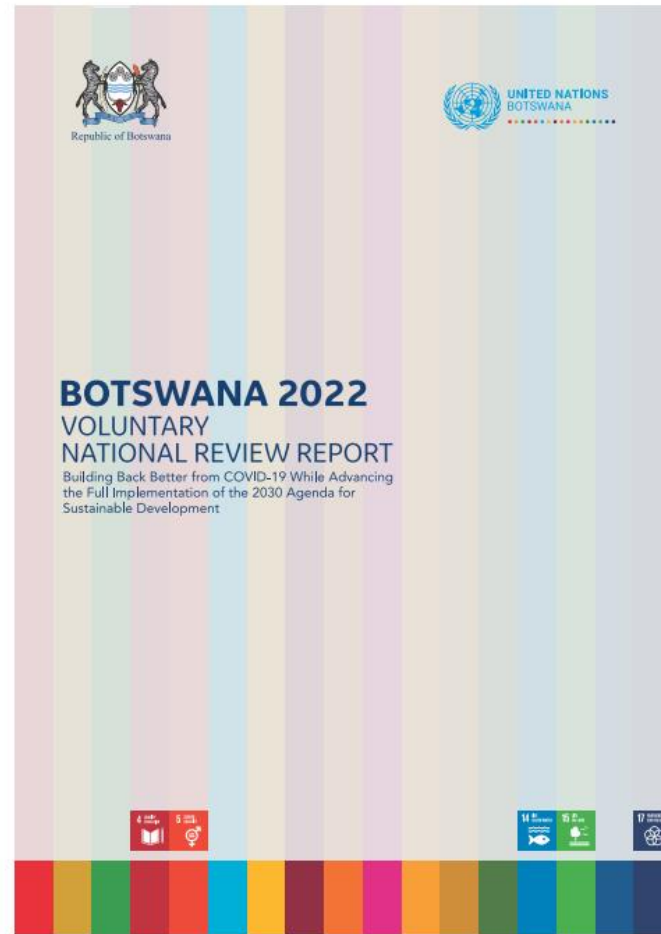
- Land mass: 582000 Sq KM2
- Pop:2,346,179
- Female Proportion of Pop: 52%
- Currency: BWP
-



Real GDP Growth



Botswana SDG Domestication





Botswana SDG Domestication

Domestication through formulation of SDG Roadmap

CC Policy and Action Plan: Determination & Costing Nationally Determined Contribution

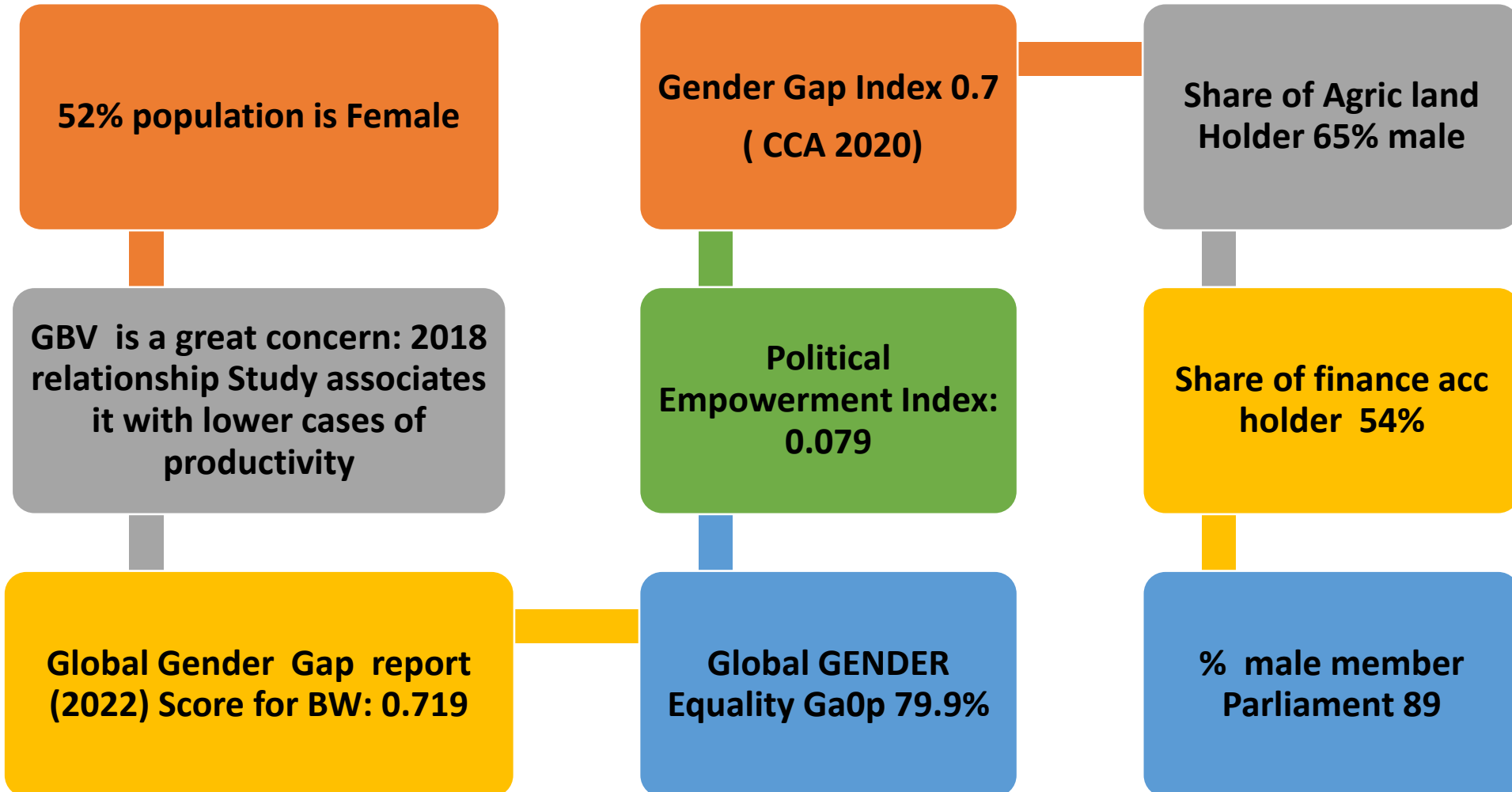
SDG Communication Strategy

SDG Status Report

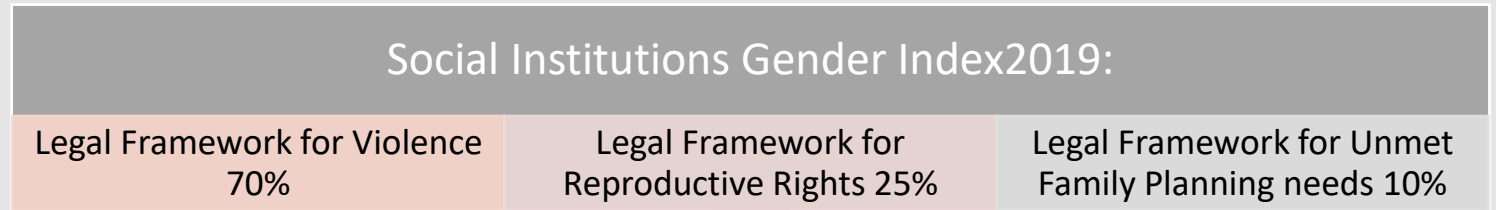
**DFA& Roadmap for the National Financing Framework
Towards an SDG Financing Strategy**

Reporting on Progress: NDC; VNR 2017 & 2022;

Business Case for Gender Responsive Budgeting: BW



Business Case for Gender Responsive Budgeting



Human Development Report 2022:

Botswana Ranks 117 out of 191: HDI Value 0.693

Gender Development Index: 0.981

Key Issues unearthed by the DFA

Over-dependence on diamond mining and extractives.

Slowly Increasing Public Debt

Lack of Micro-Finance Meeting the Needs of MSMEs

Gross Reserves Have Been in Decline Since 2006

Open Economy Makes Botswana Vulnerable to Exogenous Shocks

Reducing fiscal buffers to finance the budget deficit

Constrained Fiscal Space Impacting Borrowing and Spending

Under-developed Domestic Financial and Bond Markets

Elevated Unemployment Rate and Gender Inequality

Lack of Competitiveness, Regional Value Chain, FDI and Digital Economy

Limited Innovation in the Sustainable Financing Space

No Central Bank Guidance on New Taxonomies

Shallow Financial Markets

Limited Range of PPPs and Role of SOEs Needs Clear Policy Guidance

Growing Focus on Fiscal Decentralization



How the Gender Assessment shaped BW INFF

The INFF was undertaken as a normative DFA process however a gender responsive sustainable financing assessment parallel the diagnostic.

The integrated gender - DFA assessment allowed the overall diagnostic survey to be enriched with gender disaggregated data where it existed.

Both strategic and practical gender needs were identified, alongside entry points for strengthening financial inclusion and the alignment of public spending to SDG 5.

The policy, regulatory and strategic landscape was reviewed, from a gender equity and equality perspective, with observations made towards strengthening.

The Road Map mainstreaming gender into all proposed corrective measures, but include specific measures including changes to financial inclusion, adjustments to fiscal policy, gender responsive budgeting and changes in SME financing among other measures.

The final INFF is being developed to include a deep dive on a Medium Term Revenue Strategy (MTRS) and Fiscal Decentralization, both of which will employ a gender lens and promote a proactive approach to inclusive growth. A wider range of financial instruments identified, including gender bonds, tax and non-tax measures and catalytic first loss capital, will be included in the final INFF



Botswana
INFF
Roadmap

Strategic Objectives of the Botswana INFF Roadmap

1. Enabling Governance & Coordination Measures

Agree on a Common Vision for Transformation

Draft Financing Strategy and Undertake Validation Dialogues

2. Domestic Public Action

- Develop Sector Level Financing Strategies, including gender as key sector
- Establish a Sustainable Financing Unit in the Bank of Botswana

3. Domestic Private Actions (with emphasis on gender financing)

- Develop Inclusive Apex Financing Instrument for Participating Finance Institutions
- Finance Product Space Development
- Strengthen Corporate Environment, Social and Corporate Governance (ESG) Adoption

4. International Public Actions

- Financing Research and Development

Strategic Objectives of the Botswana INFF Roadmap

5. International Private Actions

- Transition to low carbon economy
- Development of carbon markets

6. Adoption of New Financing Instruments

- Gender responsive budgeting
- Climate financing
- Environmental Credits Markets

Next Steps

Next Steps

- **Articulating the Integrated Financing Framework in consonance with development of NDP12**

Thank you.

For more information, visit www.inff.org

